

# ISLER

Made in Switzerland

## MCT'S ÉRIE

SMALL IN SIZE ...  
BIG ON PERFORMANCE



We offer our customers solutions tailored to their needs and projects.  
Use this as a basis for designing your MCT loader.

**CONCEPT**

For the ultra-compact designed MCT passing through narrow passages is no problem. The design of the telescopic arm close to the front wheels allows maximum lifting power and better visibility for attaching implements / components.



**MOTOR**

The MCT14 is equipped with a 25 hp Yanmar diesel engine or 57 hp optional that meets STAGE 5, EPA Tier IV and four-wheel drive requirements. This ensures stability and efficiency when maneuvering on rough terrain.



**LIFTING**

The height and force of ISLER MCT's lifting arm has been set to ensure that the vehicle operates reliably in any position. Its impressive lifting capacity reaches up to 1.4 tones and a maximum height of 4.54 meters.

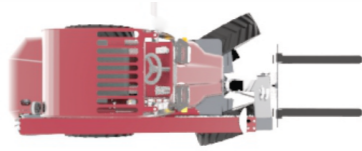


**SAFETY**

The MCT is equipped with a rigid and stable monobloc chassis. Thanks to the balanced center of gravity, excellent stability is guaranteed. In addition, the MCT has the advantage of being equipped with a body that is resistant to snagging and impacts of any kind.

**MANEUVERABILITY**

To ensure the best possible maneuverability in any situation, the MCT has three steering modes and a turning radius of only 1.10 m.



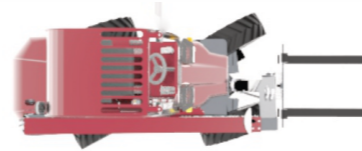
**Two-wheel steering**

For smooth steering and precise orientation



**Four-wheel steering**

Very handy in small areas.



**Crab-like**

Easy to drive around obstacles.

**COMFORT**

ISLER MCT's cab is mounted on silent blocks, ensuring quick and ergonomic access to the vehicle.

The MCT's dashboard is simple, intuitive, easy to use and can be customised to suit your needs to combine simplicity and efficiency.

The cab can be equipped with various additional options: closed, open, heated, etc. .



**ISLER CONNECT® COUPLING**

The multifunctional coupling was specially developed by ISLER MCT to simplify the change of working components. You can always couple the tools extremely easily, no matter where and in what position the vehicle is. The ISLER CONNECT coupling automatically compensates for any unevenness in the ground.

The MCT is equipped with a hydraulic lock that can be conveniently operated from the cab.



**UNPUBLISHED**

**EASY TO MAINTAIN**

The innovative design of the MCT has been specially developed for you to ensure easy and quick maintenance.



## COMPACT AND VERSATILE

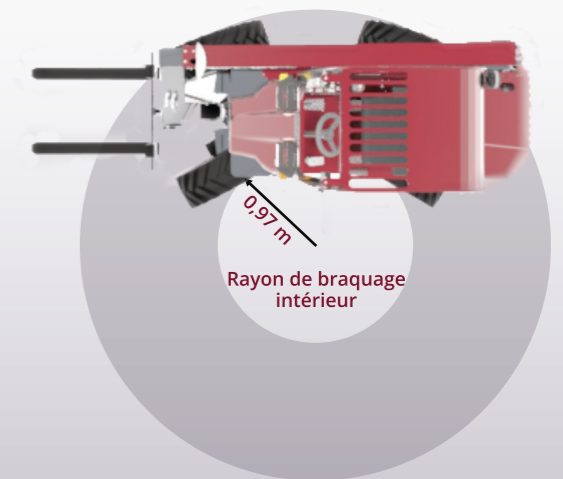
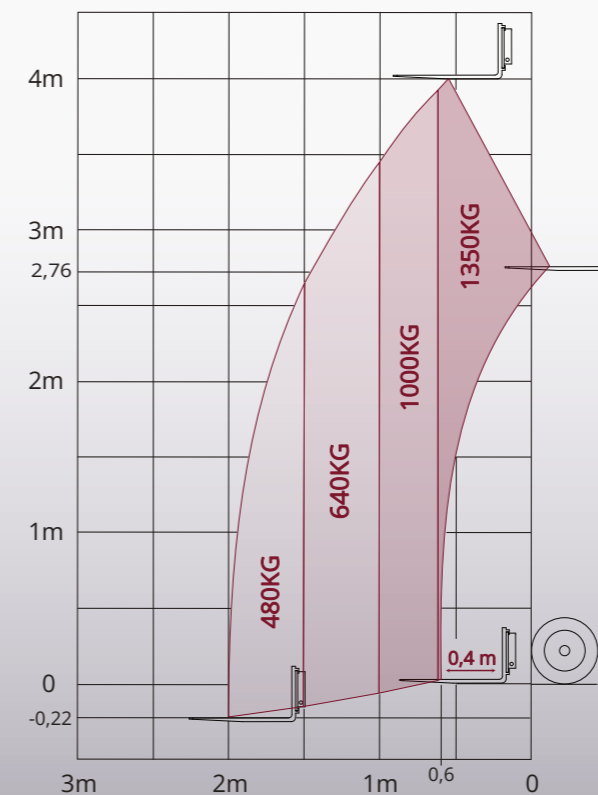
Our MCT models are extremely compact, making them ideal for maneuvering in narrow, uneven spaces.

If you'd like to find out more, please contact us and we'll arrange a demonstration.



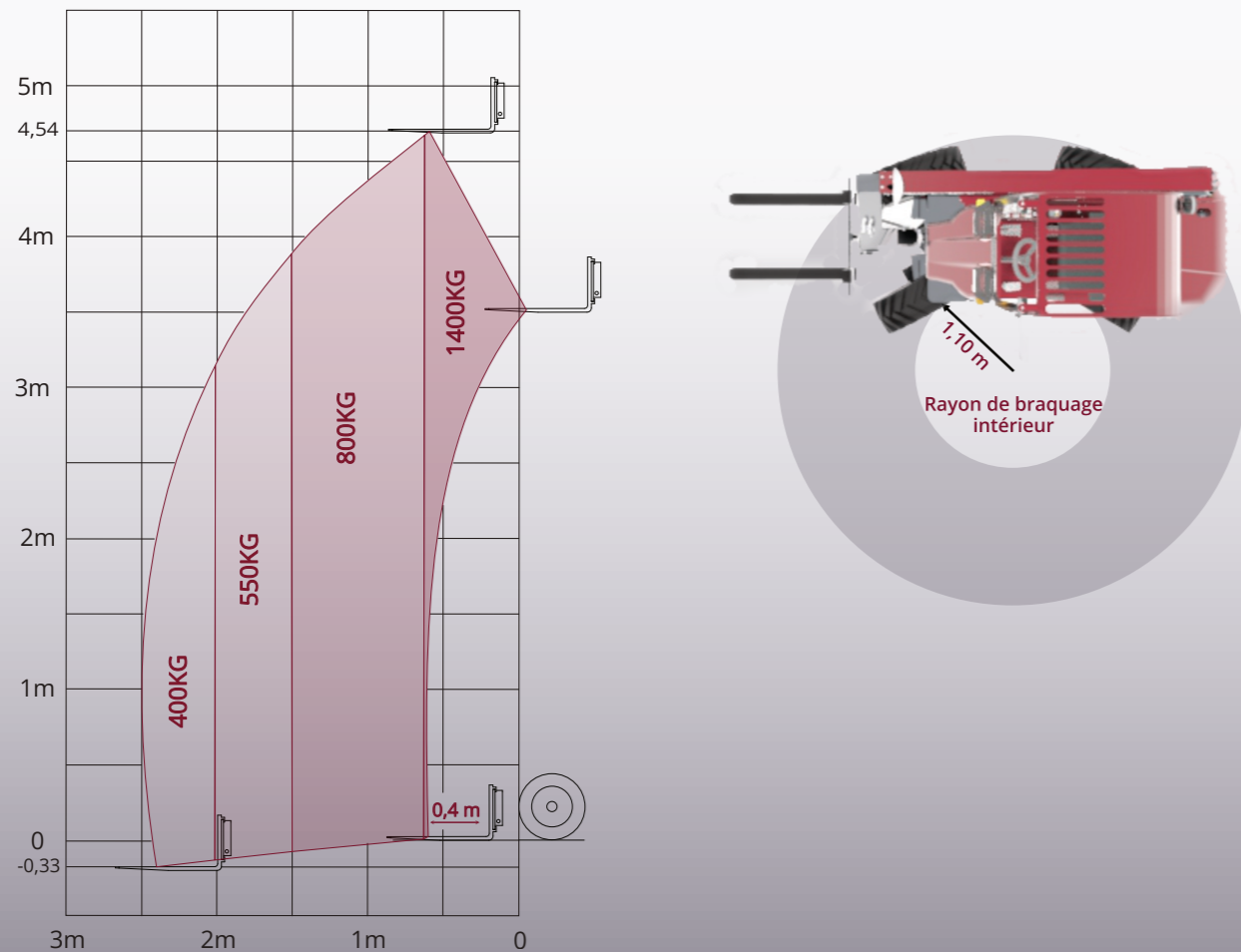
## TECHNICAL DATA

	<b>MCT13</b>
Lifting force	1350 kg
Tipping load	1700 kg
Lifting height max.	4,20 m
Lifting height under accessory	4 m
Engine type	Stage 5
Power	25 HP
engine torque	105 Nm à 1500 tour/min
Drive	18 km/h
Driving speed	Hydrostatic
Hydraulic pump flow rate	Dès 44 L/min
Fuel tank	30 L
Empty weight	2000 kg
Overall width wheel 6x16	0,96
Overall width wheel 10.5/75-15.3	1,17m
Height over all	1,96 m
Length over all	2,45 m
Turning radius (inside)	0,97 m
Ground clearance	0,26 m



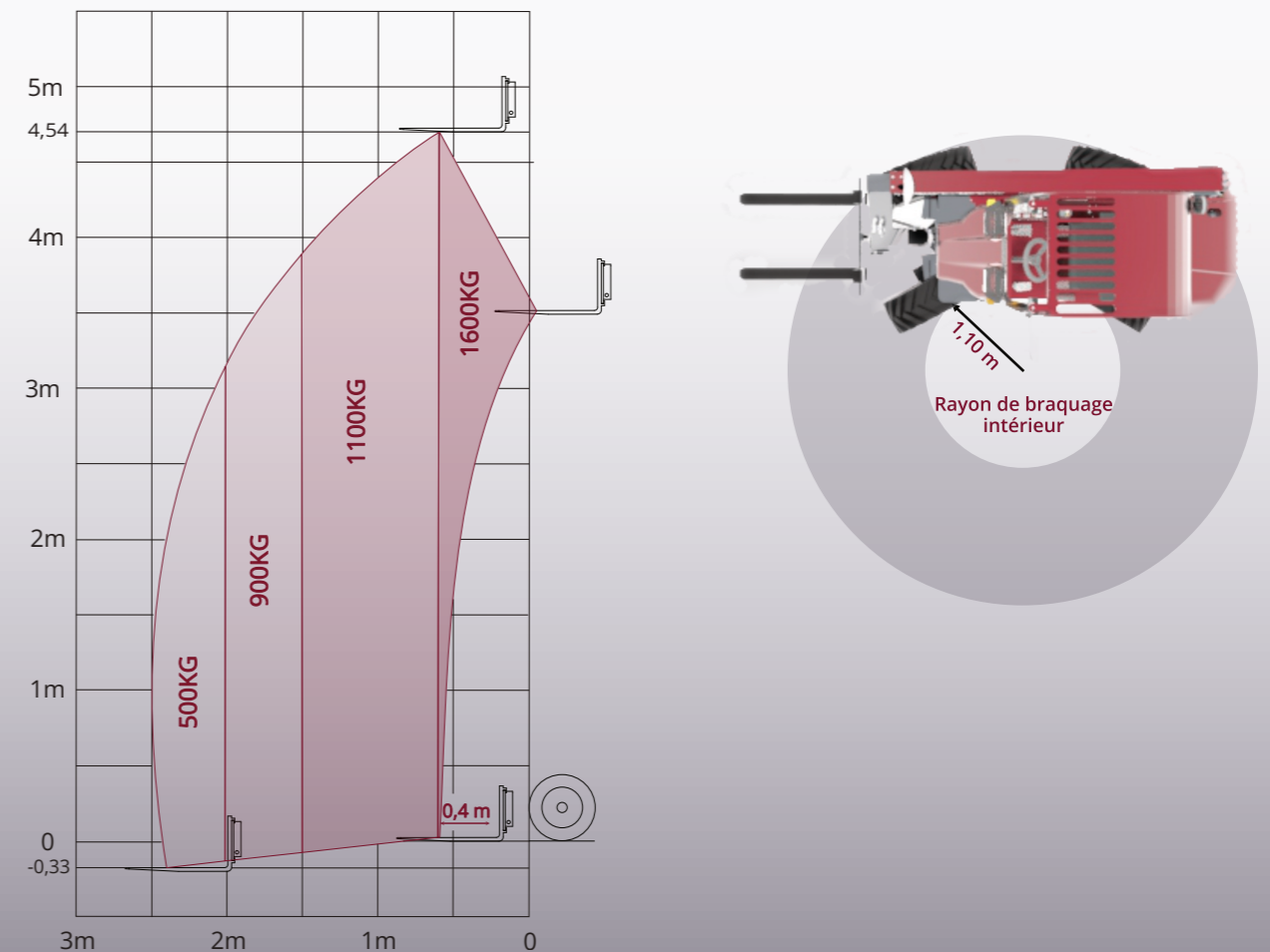
**TECHNICAL DATA**

	<b>MCT14</b>	<b>MCT14+</b>
Lifting force	1400 kg	
Tipping load	1800 kg	
Lifting height max.	4,80 m	
Lifting height under accessory	4,54 m	
Engine type	Stage 5	
Power	25 HP	57 HP
engine torque	120 Nm - 1400 tour/min	225 Nm - 1500 tour/min
Drive	Hydrostatic	
Driving speed	18 km/h	28 Km/h
Hydraulic pump flow rate	Dès 44 L/min	
Fuel tank	32 L	
Empty weight	2200 kg	
Overall width wheel 6x16	0,96 m	
Overall width wheel 10.5/75-15.3	1,17 m	
Overall width wheel 31/75-15.3	1.43 m	
Height over all	1,96 m	
Length over all	2,78 m	
Turning radius (inside)	1,10 m	
Ground clearance	0,26 m	



**TECHNICAL DATA**

	<b>MCT16</b>	<b>MCT16+</b>
Lifting force	1600 kg	
Tipping load	2000 kg	
Lifting height max.	4,80 m	
Lifting height under accessory	4,54 m	
Engine type	Stage 5	
Power	25 HP	57 HP
engine torque	120 Nm - 1400 tour/min	225 Nm - 1500 tour/min
Drive	Hydrostatic	
Driving speed	18 km/h	28 Km/h
Hydraulic pump flow rate	Dès 44 L/min	
Fuel tank	32 L	
Empty weight	2250 kg	
Overall width wheel 10.5/75-15.3	1.17 m	
Height over all	1,96 m	
Length over all	2,78 m	
Turning radius (inside)	1,10 m	
Ground clearance	0,26 m	



### STANDARD EQUIPMENT

#### Driver's cab

- Open cabin with window on the right side
- Comfortable seat with safety belt
- Charge level indicator and motion interrupt

#### Lighting

- LED working lights on the cab roof, 2 in the front and 1 in the rear

#### Transmission

- Foot gas pedal
- Evenly distributed drive on all 4 wheels
- Proportional overspeed governor (slow speed device)
- Steering settings (2-wheel front steering, 4-wheel steering, crab steering)
- Service brake on all 4 wheels via the low-speed drive device
- Parking brake with discs on the front axle

#### Loading device

- Telescopic arm with hydraulic parallelogram
- Quick coupler with hydraulic locking of the attachment from the cab
- ISLER CONNECT attachment system fixed

#### Hydraulic system

- Mechanical joystick with direction control
- 2 Mechanical controls for telescoping and accessories
- Trailer hitch

### EQUIPEMENTS OPTIONS

#### Operator's cab

- Heated cab with safety glass in front, rear window and roof
- Front windshield wiper
- Front windshield wiper
- Complete radio equipment

#### Lighting

- LED working lights on the telescopic arm, at the front
- Rotating beacon

#### Road approval

- Road lighting complies with Swiss legislation
- Road approval Switzerland
- License plate holder front and rear

#### Attachment for the charger

- Quick coupling hydraulic hoses for the attachments (Mach 2)
- ISLER CONNECT mobile coupling
- EURO interface

#### Hydraulic system

- Electronic joystick with 4 proportional functions
- Joystick with 2 electrical and 2 mechanical functions
- Heater / cooler for hydraulic oil
- Additional hydraulic pump for special accessories

#### Various

- RAL special paint
- Reversing warning sound (as per country specific regulations)
- 2 travel speeds

### PNEUMATICS

The tires of the MCT can be adapted to the working environment.  
Below is a selection of compatible models:

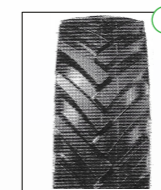
#### STANDARD



10.5/75-15.3

width 1,17 m

#### OPTIONS



6.00 x 16

width 0,96 m



250/75 R16

width 1,17 m



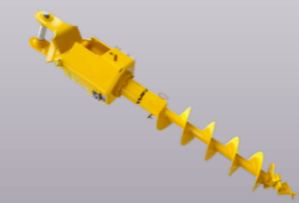
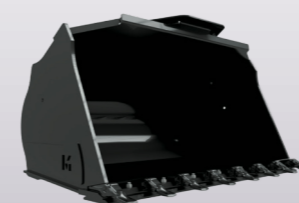
31/15.5-15

width 1,43 m

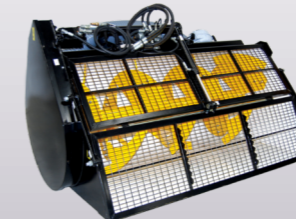


### ACCESSORIES

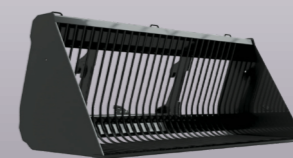
#### STANDARD



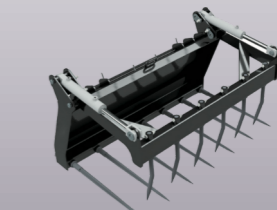
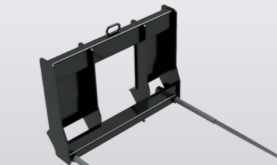
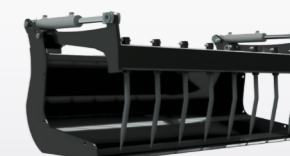
#### PUBLIC WORK

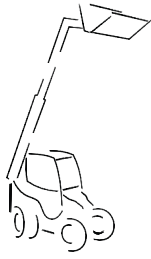


#### GREEN SPACES



#### AGRICULTURE





# ISLER

Développeur & Constructeur



**Headquarters:**

ISLER MCT - Le Corbusier 30 - CH- 2400 Le Locle - Suisse

Tél. : +41 (0)79 283 18 91 - Mail : [info@islermct.ch](mailto:info@islermct.ch)

[www.islermct.ch](http://www.islermct.ch)



Your dealer: